

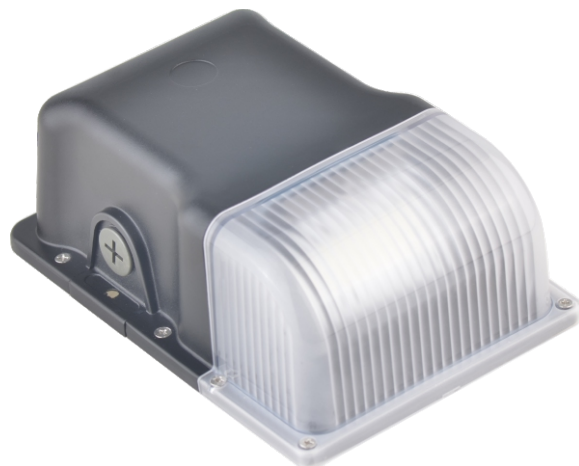


LED Mini Wallpack Light BRIGHTEN YOUR LIFE

NEW LED TECHNOLOGY THAT ALLOWS THE
COEXISTENCE OF ENVIRONMENTAL
PROTECTION AND ENERGY SAVING

Benefits

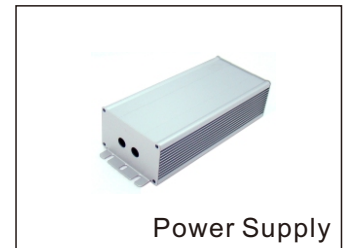
1. Replace conventional Wallpack Lights.
2. Precision Die Cast Aluminum Housing.
3. Fade Resistant Powder Coat Finish.
4. Easy Installation.
5. CE ROHS listed.
6. No sensor, Photocell sensor, PIR sensor optional.



BB-RSD-XXX-C2

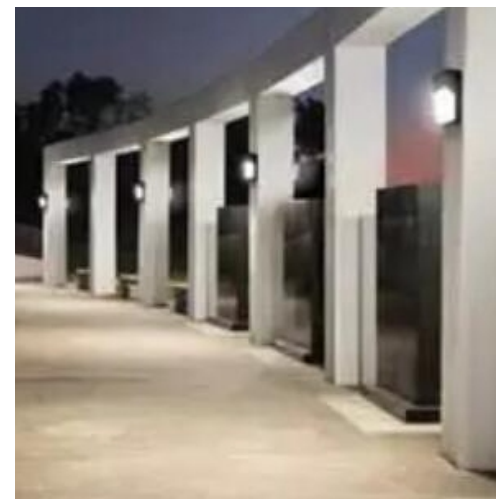
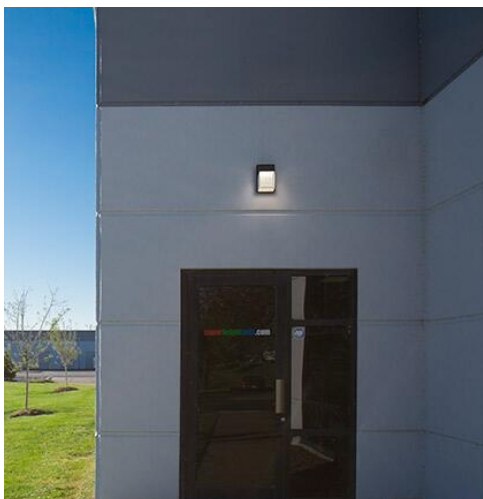
Features

1. Beam angle:120 degrees.
2. Aluminum die-casting heat sinks is good for heat dissipation.
3. It's major to replace the conventional wallpack light.
4. Green, energy saving, long and reliable life of 50,000 hours.
5. No RF interference, No IR/UV radiation ,no mercury pollution.
6. Wide colour availability in degrees Kelvin(K),2700-6700K.
7. Streamline exterior design, beautiful appearance.
8. Environment friendly ,energy saving (70~80%).
9. Special circuit design, each LED work separately, avoiding the single broken LED influence problem.



Application

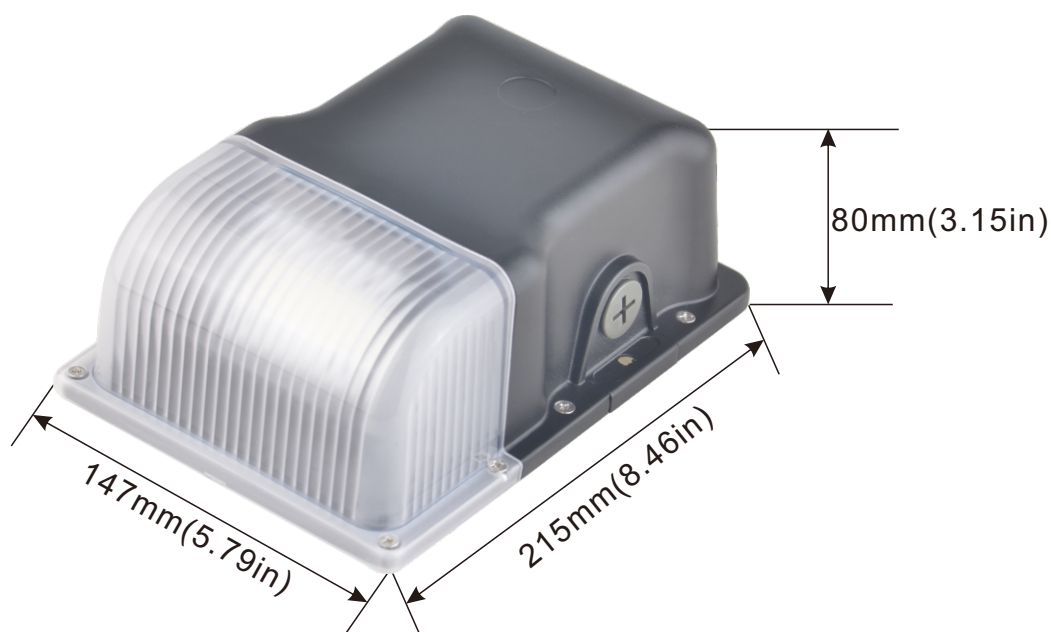
1. Parking areas Lighting.
2. Garden yard Lighting.
3. Outdoor Building Lighting.
4. Indoor Wallpack Lighting.



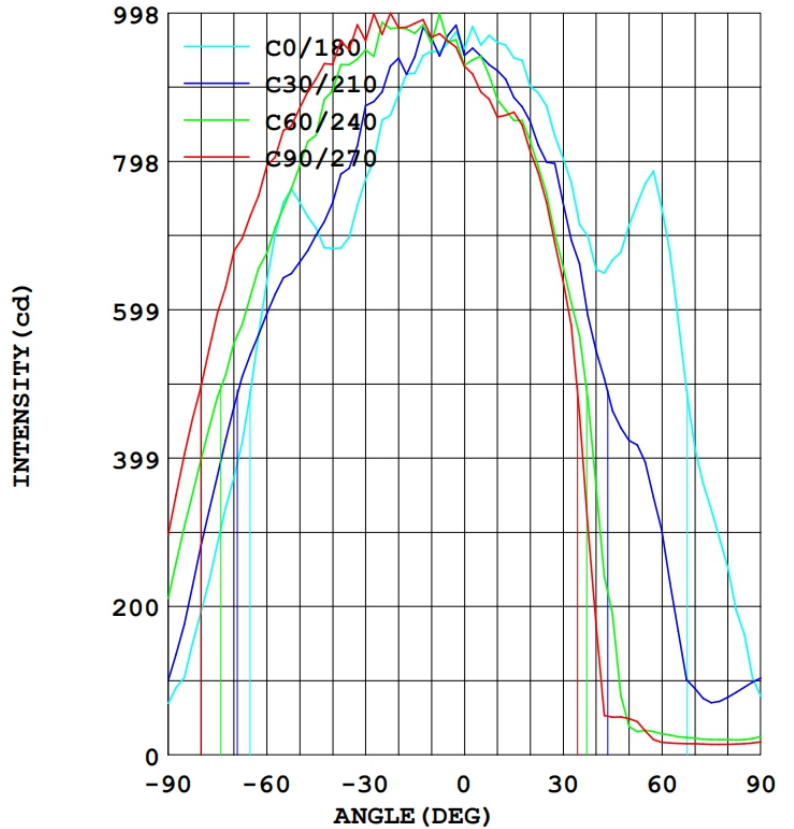
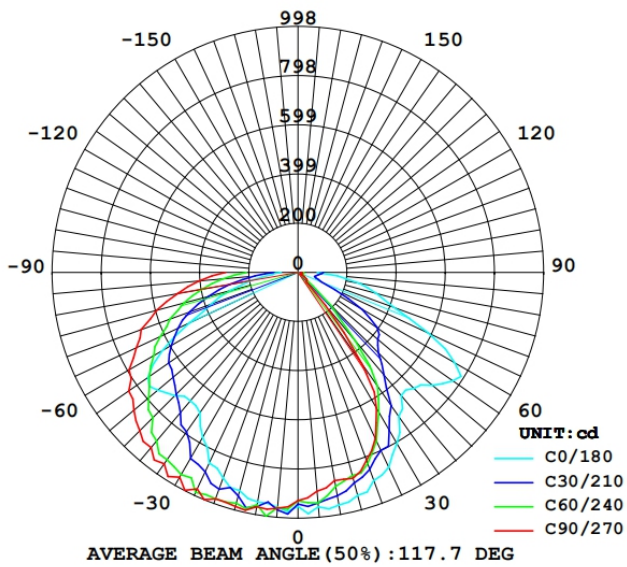
SPECIFICATIONS

Power	20W	30W
Model	BB-RSD-20W-C2	BB-RSD-30W-C2
Luminous Flux	1800lm	2700lm
Replacement	HPS 75W	HPS 100W
Light Source	SMD LED	
Luminous Efficacy	90lm/W	
Operation Temp.	-40 to +45°C	
CCT	2700K SW / 3000K WW / 4100K NW / 5000K DW / 5700K CW	
CRI	85	
Life Span	50,000 hours at 25°C	
Voltage	100-277VAC/50-60HZ	
Driver	UL listed power supply	
Sensor	No sensor, Photocell sensor, PIR sensor optional.	
Beam Angle	120°	
Cover	PC cover	
IP	65	
PF	>0.95	
Warranty	3/5Years	

DIMENSIONAL DRAWING



LUMINOUS INTENSITY DISTRIBUTION



PROJECTS

By using our 20w led wallpack light replace 75W MH/HPS/HID/LPS ect traditional lamp fixture for outdoor wall light, customer is now able to save a lot per month from his electric bill.



Replace



20W LED=75W HPS

Note:

- Don't take the LED lamp apart.
- The LED lamp must work under the right voltage according to the specification.

PACKING INFO



Item	Packaging unit	Carton Size(mm) (L*W*H)	N.W	G.W	Volume weight
20W-30W	1pc/CTN	270x200x130mm	2.0kg	2.8kg	2.5kg