

# LED Street Light

## BRIGHTEN YOUR LIFE

NEW LED TECHNOLOGY THAT ALLOWS THE  
COEXISTENCE OF ENVIRONMENTAL  
PROTECTION AND ENERGY SAVING

### Benefits

1. Replace conventional street Lights.
2. Precision Die Cast Aluminum Housing.
3. Durable Chip and Fade Resistant Powder Coat Finish.
4. Easy Installation.
5. CE ROHS listed.



Standard

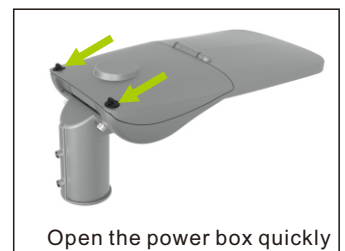
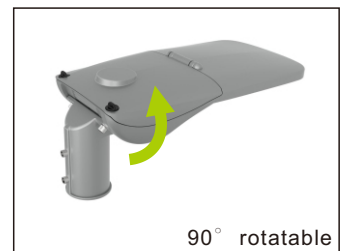
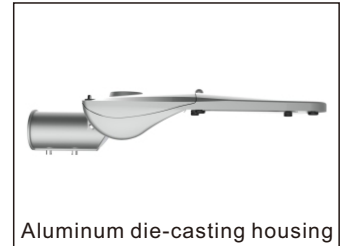


Options: With Microwave Sensor

BB-LD-XXXW-Q

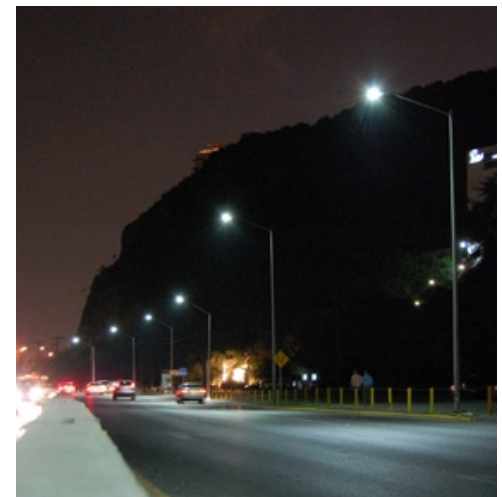
## Features

1. Beam angle: Type II , Type III, Type IV , degrees.
2. Aluminum die-casting heat sinks is good for heat dissipation.
3. It's major to replace the conventional street light.
4. Green, energy saving, long and reliable life of 50,000 hours.
5. No RF interference, No IR/UV radiation ,no mercury pollution.
6. Wide colour availability in degrees Kelvin(K),2700-6700K.
7. Streamline exterior design, beautiful appearance.
8. Environment friendly ,energy saving (70~80%).
9. Special circuit design, each LED work separately,  
avoiding the single broken LED influence problem.
10. You can quickly open the power box by two black buttons.  
In order to view the power supply and replace the power supply.
11. No Blue Light . Eye safe protect available.



## Application

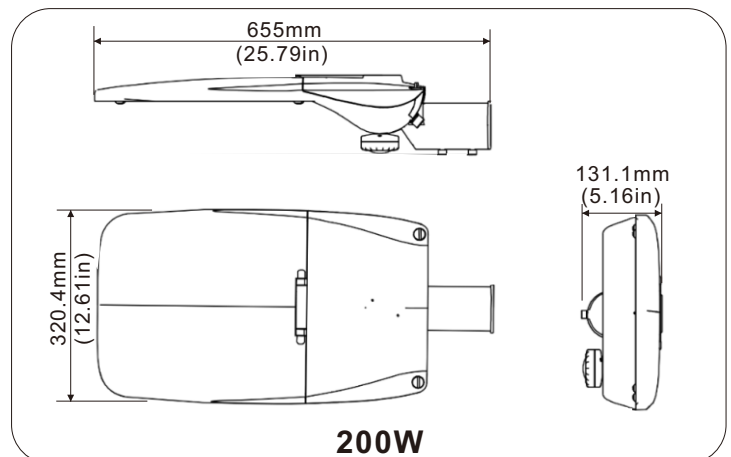
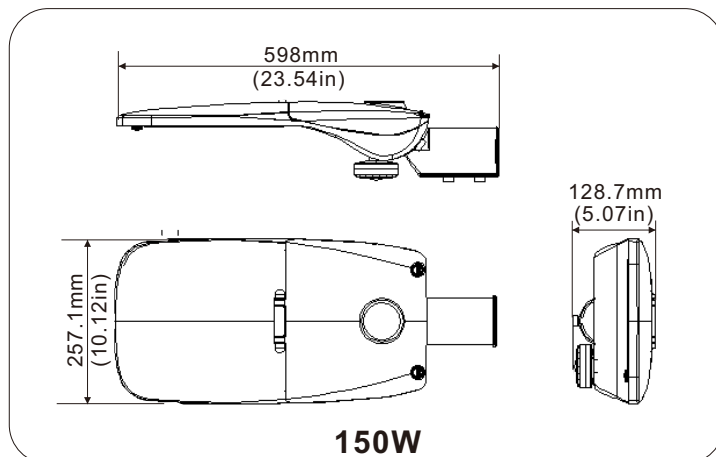
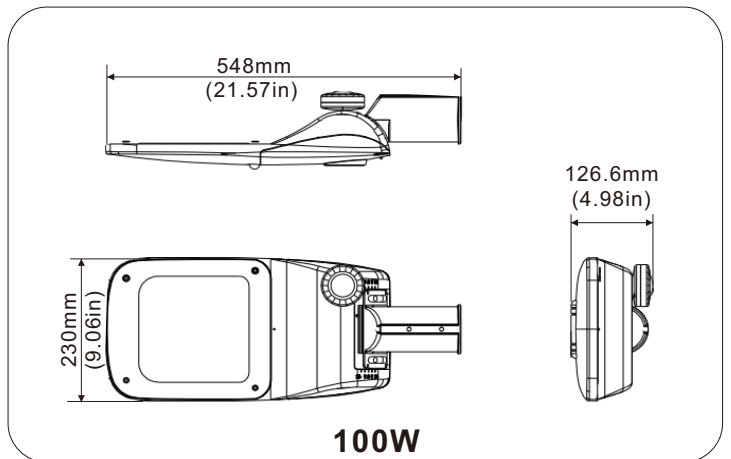
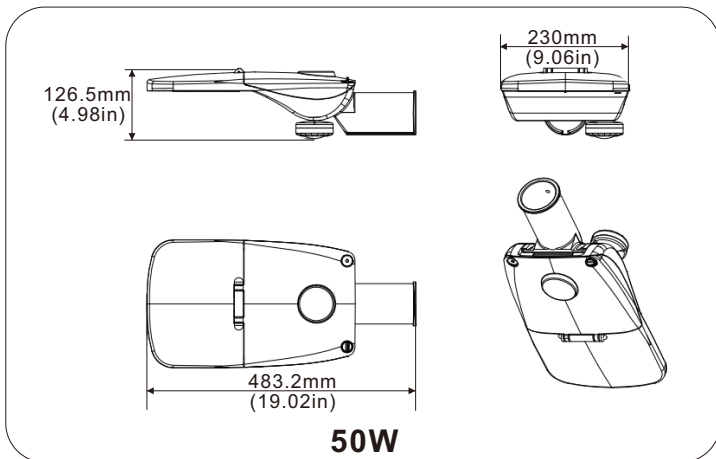
1. Area Lighting/Street Lighting.
2. Architectural decorative Lighting.
3. Industrial Lighting.
4. Stadium Lighting.
5. Port wharf Lighting.
6. Roadway Lighting.



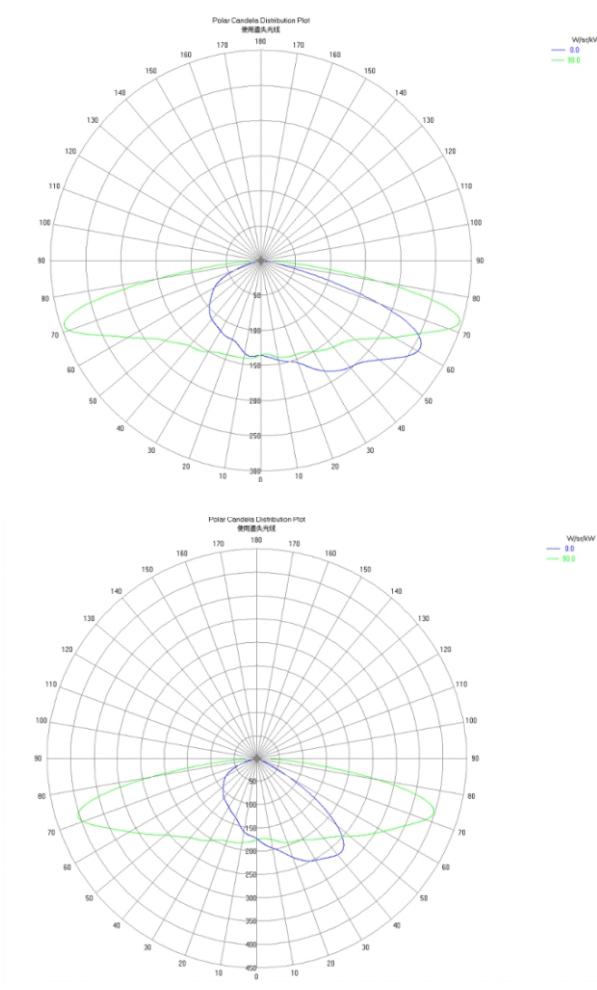
# SPECIFICATIONS

Power	50W	100W	150W	200W
Model	BB-LD-50W-Q	BB-LD-100W-Q	BB-LD-150W-Q	BB-LD-200W-Q
Luminous Flux	6500lm	13000lm	19500lm	26000lm
Replacement	HPS 150W	HPS 300W	HPS 400W	HPS 600W
Light Source	SMD LED			
Luminous Efficacy	130lm/w, Options:150lm/w,160lm/w.			
Operation Temp.	-40 to +45°C			
CCT	2700K SW / 3000K WW / 4100K NW / 5000K DW / 5700K CW / 6500K SCW			
CRI	80+			
Beam Angle	Options:Type II ; TypeIII; TypeIV.			
Life Span	50,000 hours at 25°C			
Voltage	100-277VAC/50-60HZ			
Driver	CE ROHS UL listed power supply			
Sensor	NO Sensor,Options:With Photocell Sensor,or with Microwave Sensor.			
Control system	Options:PLC Control System.			
IP	66			
PF	>0.95			
Warranty	5Years			

# DIMENSIONAL DRAWING



# LUMINOUS INTENSITY DISTRIBUTION



# PROJECTS

By using our 100W street Light to replace 300W Metal Halide bulb for street lighting fixtures, the customer is now able to save a lot per month from his electric bill.



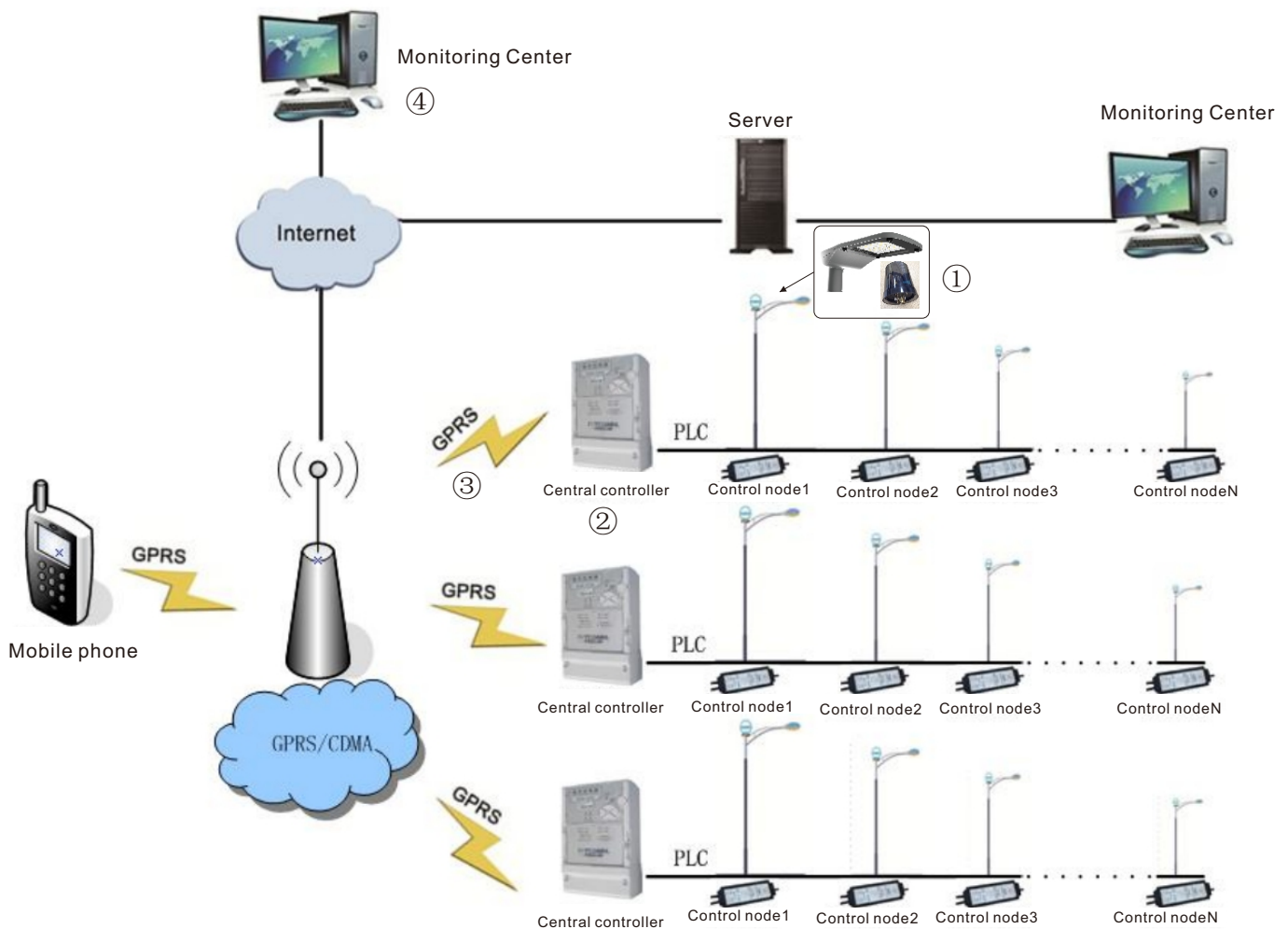
**100W LED = 300W MH**

### Note :

- Don't take the LED lamp apart.
- The LED lamp must work under the right voltage according to the specification.



# SEMS PLC street light monitoring system



- ① .....The street light with controller.
- ② .....Centralized controller SEMS-DCO9W(include software SEMS-SLCS V3.0).
- ③ .....GPRS/CDMA/3G communication technology.
- ④ .....Monitoring Center(include center server and database).
- ⑤ .....Operation side: Mobile phone, ipad, computer.

- SEMS power carrier (PLC) street light monitoring system by the host computer management software, centralized controller, terminal controller (single Lamp controller, dual lamp controller), centralized controller installed in the distribution cabinet, the terminal controller installed in the lighting terminal.
- Centralized controller through the GPRS / CDMA / WCDMA wireless network or wired network communication with the monitoring center, the terminal controllerCommunicate with the centralized controller with power carrier communication (PLC).
- The centralized controller receives, executes, and forwards the host Machine management software command, the control of each terminal controller to achieve the control of each street

lights off and dimming, saving electricity can. And can monitor the terminal controller under the lamp power information to achieve lamp failure alarm function.

- The centralized controller is available Built-in DO to achieve street light loop control, through the analog, digital DI input port, you can add other equipment to collect Field lighting, temperature and other information, and feedback to the host computer management software, to achieve real-time monitoring of the scene.

If you buy our lights, we have two ways for you to choose:

- 1.If you only need one light or a few lights, you do not want to buy the centralized controller, you can buy a lamp with a controller.
- 2.Also you can buy a centralized controller and multiple controllers, but be sure to note that each lamp must be equipped with a controller.

## PLC Control System



Controller



Centralized controller

PLC Is the abbreviation of English Power line Communication.

Power carrier is a power system-specific communication, power carrier communication refers to the use of existing power lines, through the carrier mode of analog or digital signals for high-speed transmission technology. The biggest feature is the need to re-set up the network, as long as there is a wire, you can transfer data.

Wireless control system includes both light control and time control functions.

---

## Main Functions

---

1. Switch on-off and electrodeless dimming : it can control any loop circuit、 switch on-off to each light、 dimming, following the control project which has four seasons & sunset or sunrise and apply timing control and dimming control or preset various lighting management strategy.
2. Status query: you can query any loop circuit or street light switch on-off status, abnormal status will be reported automatically.
3. Electric quantity data query: you can query any street light loop circuit or a certain street electric quantity data information.
4. Self operation: when the system or communication is not normal, it can be self-timing switch on/off and dimming according to the previously designed project.
5. Cable security and current leakage test:(equipped with anti-theft extended module、 anti-theft terminal ,zero sequence instrument transformer)
6. System display: show street light system organization structure and related important information.
7. Failure alarm: it can achieve failure alarm, failure detection、 failure handle tracking function . All kinds of alarms can be set to use or not use .After the alarm, the failure alarm data will be saved to data base for future query and management.
8. Data report: Long distance to collect each lamp's electric quantity、 power、 power factor、 current、 voltage and so on; it can create main data report, energy saving statistical report、 historical current and voltage data report and so on.
9. Energy cost statistics: it can calculate daily/monthly/yearly energy saving cost and calculate them automatically.
10. Device management :it can provide management for concentrator controller、 panel point controller ,such as enter、 modify、 delete、 query and so on assets maintain protection function.
11. Map function: combine with smart networking street light data and collected GIS geography information system within system,it will show detailed reason for the failed lamps.
12. System safety management :it includes user management、 authority management、 device panel point authority management and so on.
13. Mobile terminal control: can use windows、 android 、 IOS these kinds of mobile terminal device to login smart lighting control management system to realize that all lights can be controlled by this V3 software.
14. System expandability: management system adopt B/S framework,provide open platform port and it can connect other smart city management system, facility and device.

---

## Deployment suggestion

---

In order to add the stability for the communication distance, when deploying, please pay much attentions as below:

Wireless concentrator supports the max transmission distance is 2000 meters, it is suggested that the wireless monitoring terminal should be configured within 1000 meters.

1. Concentrator terminal should be configured in the middle of circuit.
2. Wireless monitoring terminal data should be in 100 pieces.
3. Make plans for communication according to the live lamps configuration to avoid the communication jamming.
4. The installation height for antenna is higher than 3 meters.
5. Take measures for lightning protection.

---

## Configuration description

---

1. The whole project is equipped with a set of smart management system software. (For follow-up project , you can also use this.)
2. According to the local lamps distribution and topographical condition to layout wireless concentrator, generally, 100 sets of wireless terminal can be configured with a set of wireless concentrator.
3. Each lamp pole is equipped with one set of wireless terminal.
4. According to the demands for project, it can be configured with multiple pieces of luminance collector to calculate its average acquisition accuracy.



## PACKING INFO



Items	Packaging	Carton Size(mm) (L*W*H)	N.W	G.W	Volume weight
50W	1pc/CTN	417*267*155mm	3.5kg	4.3kg	5.0kg
100W	1pc/CTN	482*272*160mm	5.0kg	6.0kg	5.5kg
150W	1pc/CTN	542*302*160mm	6.0kg	7.1kg	7.0kg
200W	1pc/CTN	612*372*185mm	8.0kg	9.0kg	10.5kg