



LED Street Light

BRIGHTEN YOUR LIFE

NEW LED TECHNOLOGY THAT ALLOWS THE
COEXISTENCE OF ENVIRONMENTAL
PROTECTION AND ENERGY SAVING



1 > KEY FEATURES

- 1.High efficiency UL Certification Driver.
- 2.Imported original Lumileds 3030 LED Chip.
- 3.Aluminum lamp housing excellent structure for heat dissipation.
- 4.The surface of lamp housing is anti-corrosion and electrophoresis processed,can be used at seaside.
- 5.Dust-proof,moisture proof and waterproof ,IP66 rated.
- 6.Excellent optics design,higher luminous efficiency.
- 7.Compare to traditional lamps can save energy 70%-80%.
- 8.5 years warranty.



BB-LD-XXXW-G2

2 > FEATURES

1. Beam angle: T2M/T3M/T4M/T5M
2. It's major to replace the traditional street light.
3. Green, energy saving, long and reliable life of 50,000 hours.
4. NO RF interference, No IR/UV radiation, no mercury pollution.
5. Wide colour availability in degrees Kelvin(K), 2700-6700K.
6. Streamline exterior design, beautiful appearance.
7. Environment friendly, energy saving (70~80%).
8. Special circuit design, each LED work separately, avoiding the single broken LED influence problem.
9. Die cast aluminum lamp housing which maximize the performance of heat dissipation to the best.



3030 SMD LED



Die-casting aluminum Housing



UL listed power supply

3 > APPLICATION

It can be widely used in Street lighting, Parking lot, Architectural decorative lighting, squares, construction sites, buildings, etc

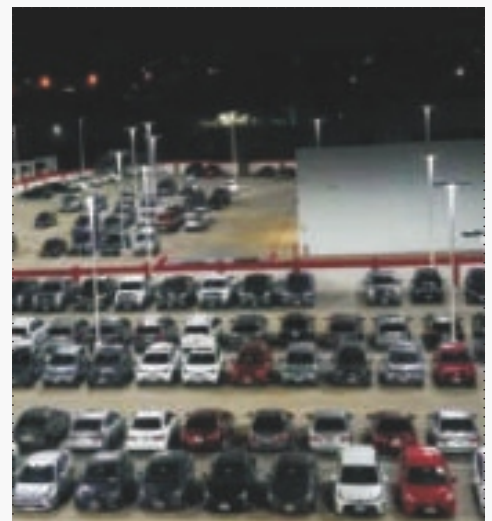
- 1. Area Lighting/Street lighting.
- 2. Parking lot Lighting
- 3. Architectural decorative lighting.
- 4. Roadway Lighting
- 5. Stadium Lighting



○ Stadium



○ Roadway Lighting



○ Parking lot Lighting

4 > PERFORMANCE DATA

Power	50W	100W	150W	200W
Model	BB-LD-50W-G2	BB-LD-100W-G2	BB-LD-150W-G2	BB-LD-200W-G2
Luminous Flux	6500lm	13000lm	19500lm	26000lm
Replacement	HPS 150W	HPS 300W	HPS 500W	HPS 700W
Dimension	560* 200* 98MM	610* 245* 98MM	660* 245* 98MM	712* 300* 98MM
Beam Angle	T2M/T3M/T4M/T5M			
Materials	Aluminum alloy+PC +Tempered glass			
Luminous Efficacy	130lm/W 150lm/W;170lm/W Available			
Operation Temp	-40 to +45°C			
CCT	2700K SW / 3000K WW / 4100K NW / 5000K DW / 5700K CW / 6500K SCW			
CRI	85			
Life Span	50,000 hours at 25°C			
Voltage	100-277VAC/50-60Hz,200-480VAC/50-60Hz			
Driver	UL listed power supply			
Dimming	Available			
Sensor	Timmer Control, Motion Sensor, Photocell Sensor, 3 in 1 dimming, Wifi Zigbee Connect, photocell+timmer control, 3 step dimming, GPRS, 3G/4G, Blue tooth, PLC and smart motion sensor.			
Microwave sensor default setting	Someone brightness 100%, microwave sensitivity 75%, hold time 5 minutes, start illumination 50LUX, continuous brightness 30%, the duration of 30 minutes.			
Cover	PC Transparent			
Luminous Source	3030 SMD LED			
IP rating	Ip66			
PF	>0.95			
Warranty	5 Years			

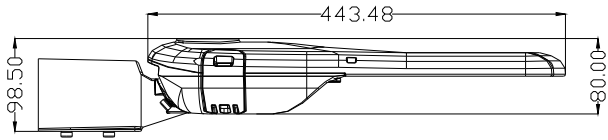
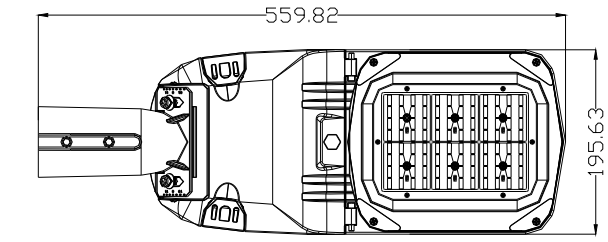
Ordering Information:

Area Series	Watts	Version	CCT	Voltage	Control	Beam Angle	Pole Connector	Color
BB-LD	50W 100W 150W 200W	G2	2700K SW 3000K WW 4100K NW 5000K DW 5700K CW 6500K SCW	Blank-100-277VAC HV- 200-480VAC	Blank - Without control Available- Timmer Control Motion Seonsor Photocell Sensor	T2M T3M T4M T5M	60mm	Blank-Silver Available- Black

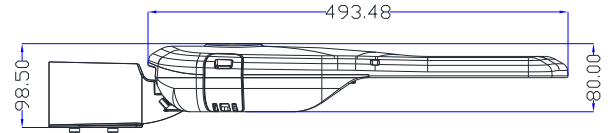
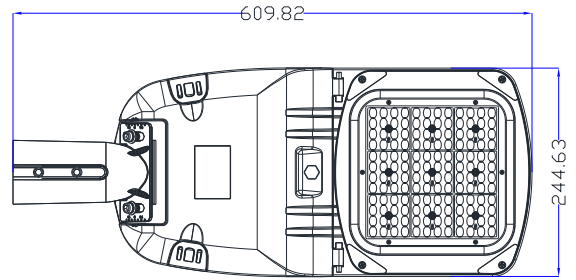
Notes: For OEM&ODM orders, pls inquiry sales team.

5 > SPECIFICATIONS

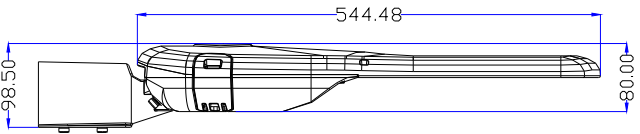
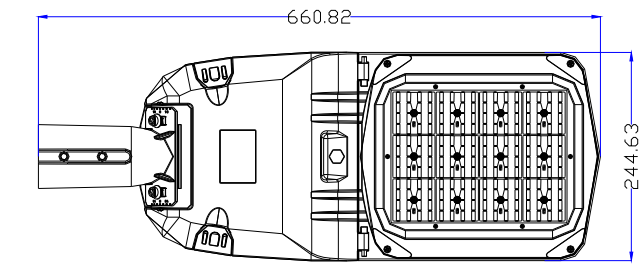
UNIT : mm



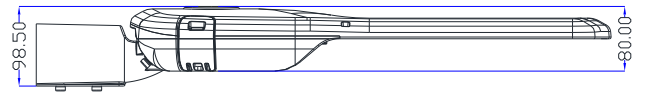
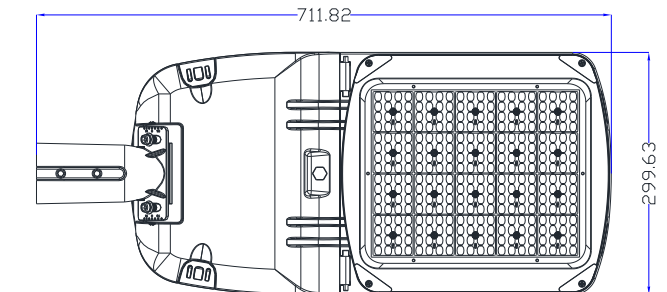
50W



100W



150W



200W

6 > PROJECTS

By using our 100W LED Light to replace 300W Metal Halide bulb for Roadway lighting, the customer is now able to save a lot per month from his electric bill.



Replace

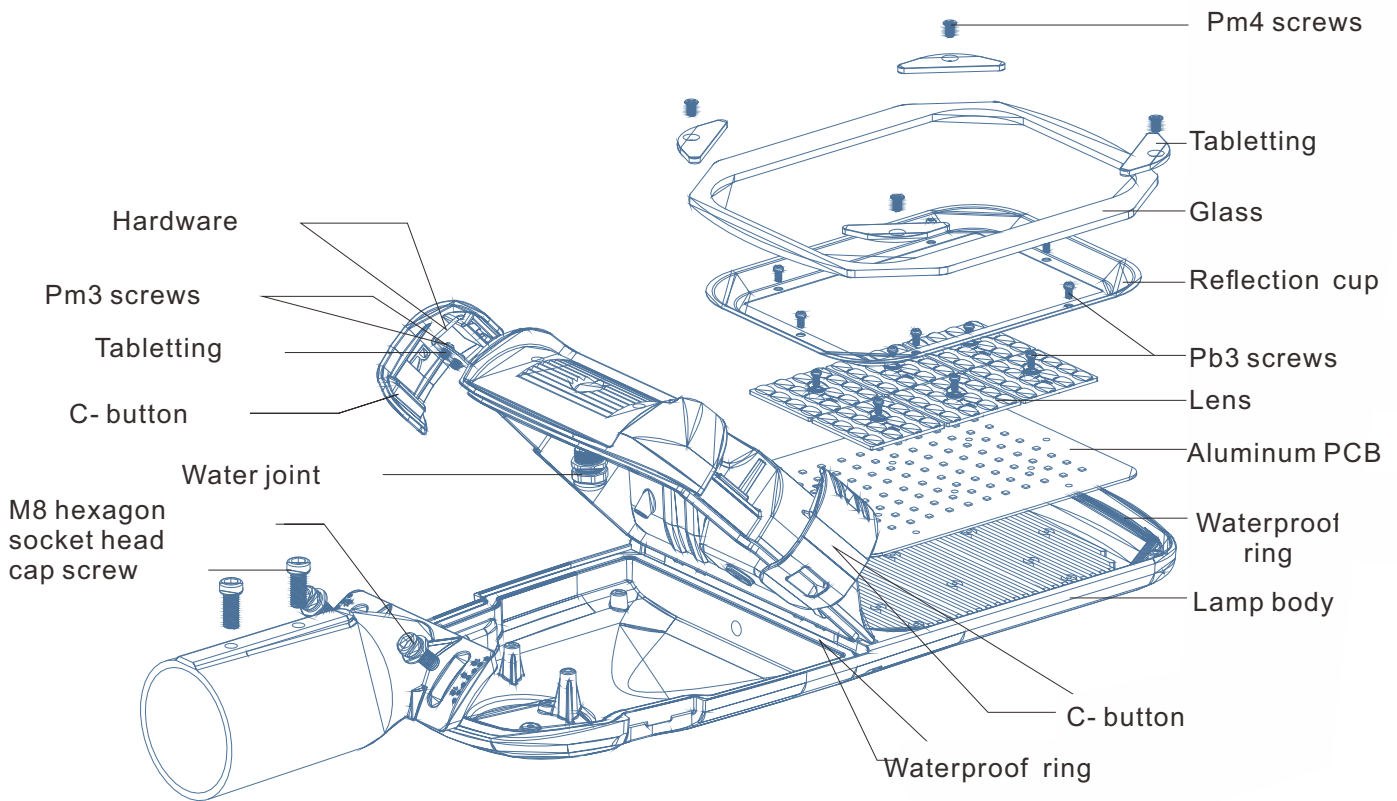
100W LED = 300W MH



Note:

- Don't take the LED lamp apart.
- The LED lamp must work under the right voltage according to the specification.

7 > PRODUCT BREAKDOWN STRUCTURE



8 > LUMINOUS INTENSITY DISTRIBUTION



Type II

Two Driveway
Driveway Entrance
Urban Main Roads

Type III

Three Driveway
Highway
Parking Lot/Area

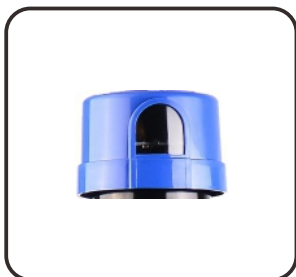
Type IV

Four Driveway
Parking Lot/Area

Type V

Square Parking
Lot/Area

OPTIONAL ACCESSORIES



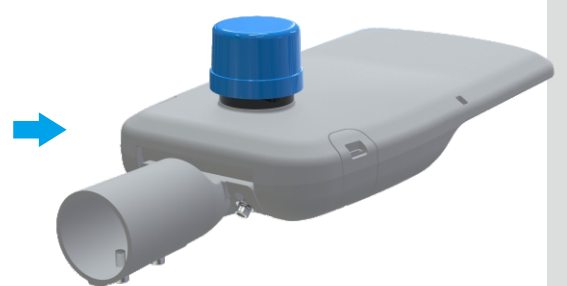
Photoelectric Control



Motion Sensor

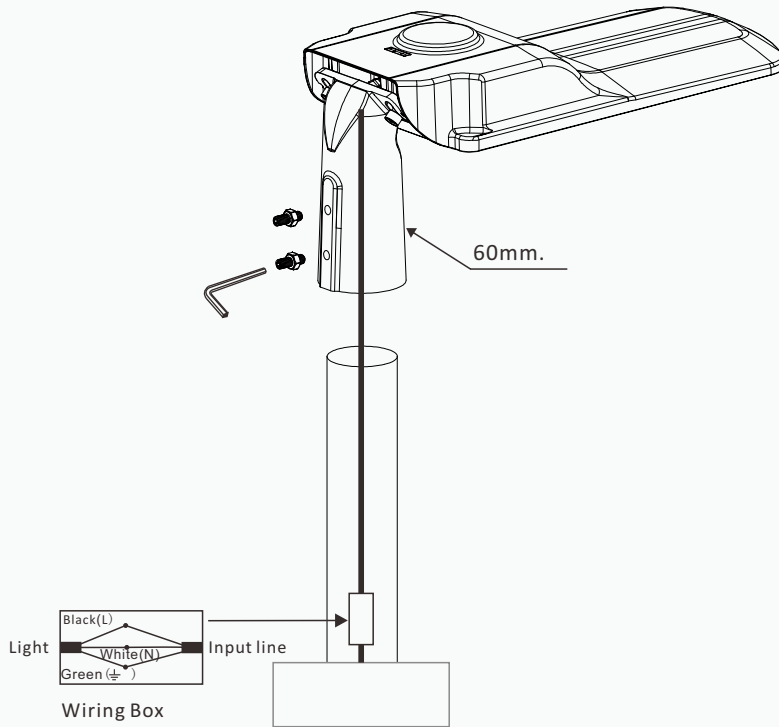


Remote Control



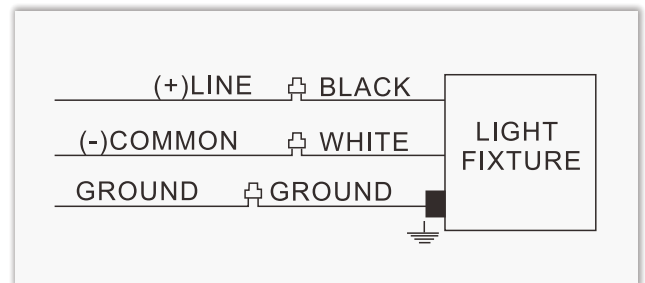
Pole mounting

- Turn off the power before installation.
- Wiring right in the wiring box ("Black" is connected to "L", "White" connect to "N", "Green" to "Ground") and set the lamp into the bracket by the hole.
- We should fasten the four screws with a hex wrench, and finished.



Wiring

- Connect the black fixture lead to the (+) LINE supply lead.
- Connect the white fixture lead to the (-) COMMON supply lead.
- Connect the green Ground wire from fixture to supply ground.



10 > **PACKING INFO**

Model	Packaging	Carton Size(mm) (L*W*H)	N.W	G.W
50W	1pc/CTN	595*225*160mm	2.8kg	3.5kg
100W	1pc/CTN	645*275*160mm	3.5kg	4.3kg
150W	1pc/CTN	695*275*160mm	4.1kg	5.2kg
200W	1pc/CTN	745*330*160mm	5.9kg	6.7kg

