

# LED GARDEN LIGHT

BB-LD-XXXW-BX



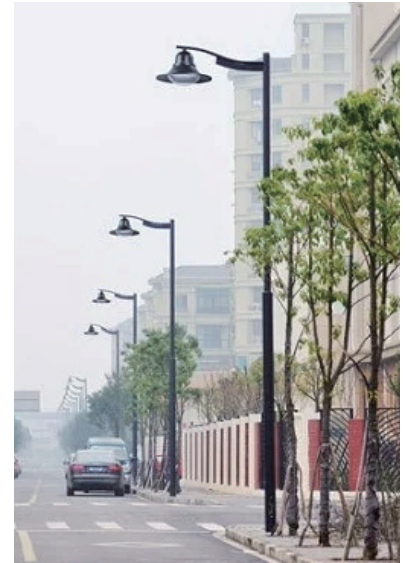
**HIGH LIGHT · DURABLE · SAVE COST**  
**50W/60W/70W/80W/90W**

Suitable for Parks/Gardens/Squares/ Outdoor parking lots/ Residential areas/  
Villa gardens/Industrial parks/Road lighting/ Lake landscape lighting

Ultra-high efficiency  
up to 150lm/W



LED Garder lights is a device which are consist of aluminum alloy frame, LED light source model and driver. It can be a replacement of HID and other traditional light fixture, provided with higher efficacy, a longer lifetime 50,000H at least or even more upto 50,000H and very lower breakdown opportunity, higher reliability and better cost than any light before. The high-performance, IP66-rated luminaire delivers a minimum of 150 lm/W, providing significant energy savings while remaining durable in the field.

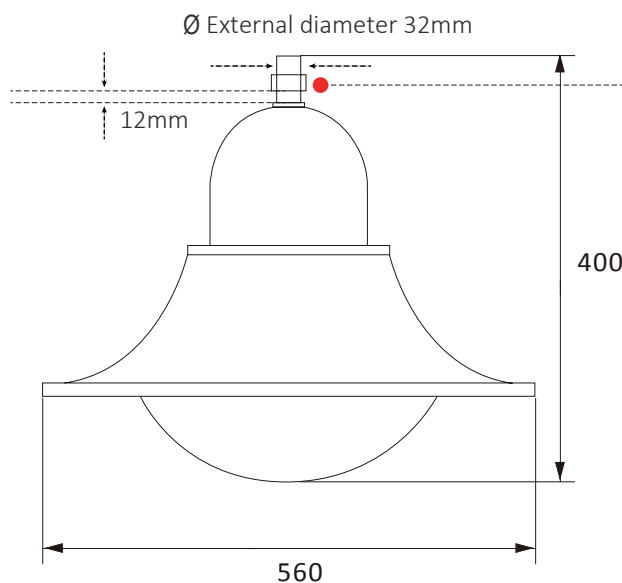


## ► Features

- ☑ European and American design style, high quality aluminum die casting, Surfacepainting process, never fade, anti-cracking.
- ☑ Adopt aerodynamic design, take heat away quickly, keep low temperature for heat sink and LED chip for longer lifespan and higher light efficiency.
- ☑ All the screws are 304stainless steel screws with stronger corrosion resistance ability
- ☑ Use branded led chip, high CRI, light efficiency up to 150 lm/W, low light decay and long lifespan.
- ☑ Through various of experimental tests: wind resistance level test, conduction radiation, 3.0G seismic test, UV aging test, RED test, high-low temperature cycle test.
- ☑ Use waterproof connector can prevent wire drag, and Waterproof ip66 more reliable.
- ☑ 10KV anti-surge LED driver, installed on die casting cover of led driver, take heat away quickly to keep lower temperature and longer lifespan
- ☑ Guaranteed quality, products by LVD ; ENEC ; ENEC+ ; CB ; CE and ROHS, international authentication.

## ► Dimension

Unit: mm



Mounting joint type:  
Conventional outer diameter 32mm,  
can be customized size

## DATA SHEET

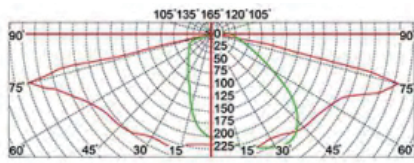
Power	50W	60W	70W	80W	90W
<b>Luminous Flux</b>	8000lm	9600lm	11200lm	12800lm	14400lm
<b>Model</b>	BB-LD-50W-BX	BB-LD-60W-BX	BB-LD-70W-BX	BB-LD-80W-BX	BB-LD-90W-BX
<b>Model description</b>	The "XXX" on behalf of the power, can be 010-090, 010=10W,011=11W..... 090=90W, wattage interval is 1W. The "X" can be:0,1,2,3; '0' means there is no zhaga connector and surge protector; '1' means there is no zhaga connector, but with surge protector in luminaire; '2' means there is zhaga connector, but without surge protector in luminaire; '3' means there is zhaga connector, and with surge protector in luminaire				
<b>Dimension(mm)</b>	Ø560 X H400				
<b>Net weight</b>	5.5kg(12.15lb)				
<b>Beam Angle</b>	Type I ; Type II ;Type III				
<b>Materials</b>	Aluminum alloy+PC lens				
<b>Luminous Efficacy</b>	160lm/W				
<b>Operation Temp</b>	-40 to +45°C				
<b>CCT</b>	2700K SW/3000K WW /4100K NW/5000K DW/5700K CW /6500K SCW				
<b>CRI</b>	70+				
<b>Life Span</b>	50,000 hours at 25°C				
<b>Voltage</b>	100-277VAC/50-60Hz ,200-480VAC/50-60Hz				
<b>Driver</b>	UL listed power supply				
<b>Sensor</b>	Intelligent controller ; Microwave sensor(Optional)				
<b>Luminous Source</b>	5050 LED SMD(3030 chip otional)				
<b>IP rating</b>	Ip66				
<b>PF</b>	>0.95				
<b>Warranty</b>	5 Years				
<b>Certification</b>	LVD ; ENEC ; ENEC+ ; CB ; CE and ROHS				

### ► Ordering Information

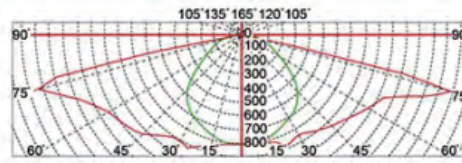
Model:BB-LD-XXXW-BX      For example:BB-LD-80W-BX-LS-50K701-WB

Electric Character			Optics Character			Physical Character	
A	B	C	D	E	F	G	H
Rated power	Input voltage	Driver brand	CCT	CRI	LED CHIP	controller	Color
50W 60W 70W 80W 90W	Blank: L-100-277V H-200-480V	Blank: S-Sosen I-Inventronics M-Meanwell	27K-2700K 30K-3000K 40K-4000K 50K-5000K 57K-5700K 65K-6500K	Blank: 70-Ra70 80-Ra80 90-Ra90	Blank:1=5050 2=3030	<b>Blank:</b> W-Without Z-Zhaga Socket <b>ZM</b> -Zhaga Socket+Motion sensor <b>ZS</b> -Zhaga Socket+ Intelligent controller	Blank: B -Black G -Gray

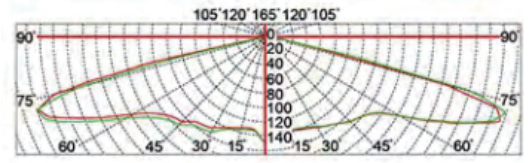
► Surface Of Intensity Distribution



Type1



Type2



Type3

► Application case

Suitable for Parks/Gardens/ Squares/ Outdoor parking lots/ Residential areas/Villa gardens/Industrial parks/Road lighting/ Lake landscape lighting



► Optional accessory(Controller)



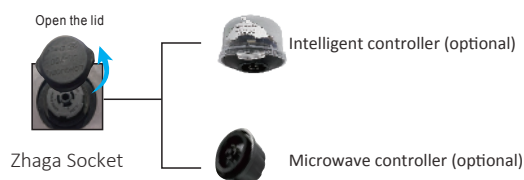
Standard style







Add controller







Zhaga Socket



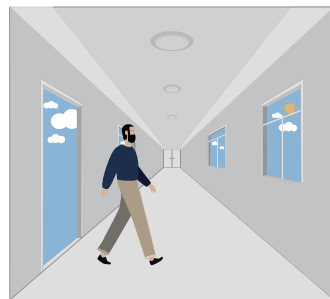
► Intelligent Controller Function(optional)

-  LORA transmission, support LORAWAN
-  With standard ZHAGA(book 18) 4-PIN interface, plug and play
-  Remotely turn ON/OFF
-  Photocell auto control

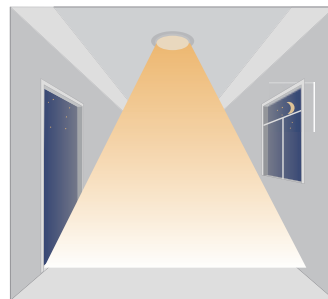
-  Auto-reporting electrical parameters and total energy, remote resetting
-  Lamp failure detection and automatic notification for alarms
-  DALI 2.0 protocol, work with D4i and Philips SR series driver
-  Remotely read electrical parameters

► Microwave controller function (optional)

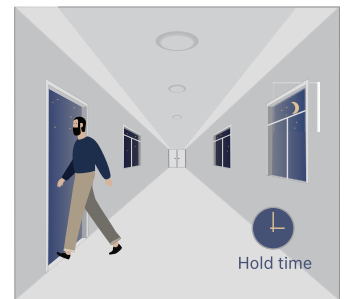
1. Automatically ON/OFF function



With sufficient daylight, even when motion detected, light remains OFF.



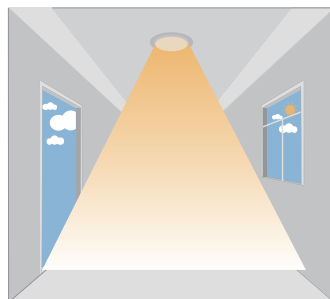
With insufficient daylight, the sensor turns light ON when motion gets detected.



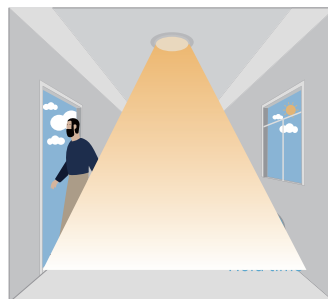
The sensor turns OFF light automatically after the holdtime when there's no motion detected.

2. Daylight Disable

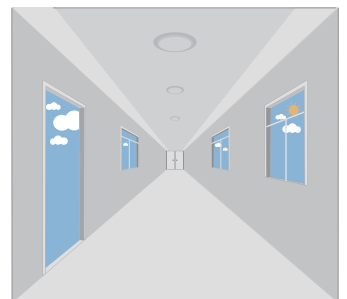
When daylight threshold is preset as "disable", the sensor turns light ON when motion gets detected, and OFF after hold-time.



The sensor turns light ON when motion gets detected.

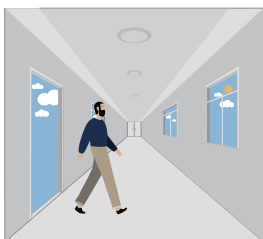


The sensor keeps light ON for holdtime period after motion leaves.

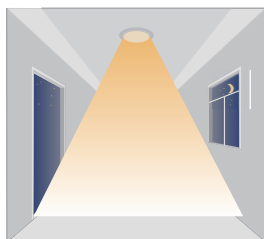


The sensor turns OFF light automatically after the holdtime.

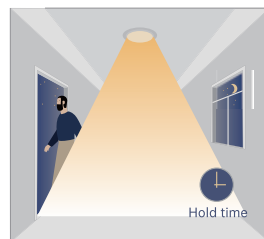
3. Corridor Function, Bi-level Dimmable



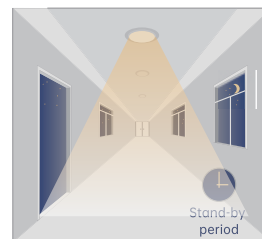
With sufficient daylight, the sensor keeps light OFF even motion gets detected.



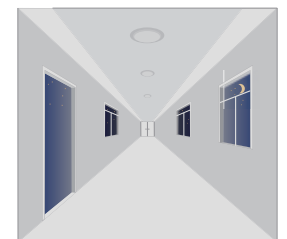
With insufficient daylight, the sensor turns light ON when motion gets detected.



After there's no motion detected, the sensor keeps light ON 100% for holdtime.

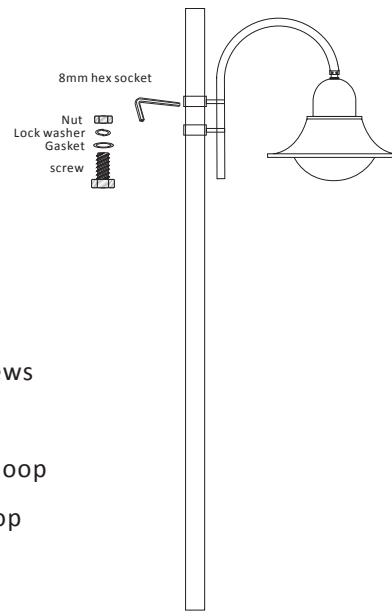
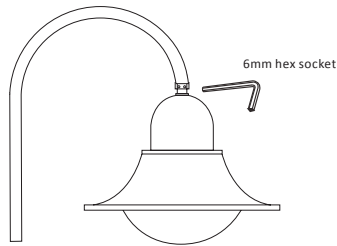


After holdtime sensor dims light to standby dimming level for standby period. If the standby period has been set as OS, sensor turns light OFF automatically after holdtime.



The sensor turns OFF light automatically after the standby period when there's no motion detected.

► INSTALLATION INSTRUCTION



1. Take the light fixture and bracket out of the packing case
2. Install the light fixture on the bracket and tighten the four M8 screws
3. Connect the power cables according to the wiring diagram below.
4. Install the lamp on the lamp pole, tighten the pile of screws (the hoop is customized according to the customer's lamp pole size, so the hoop screw size is different)

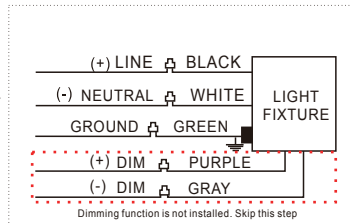
The luminaires are intended for outdoor use

All the operations must be in the condition of power off

► Wiring

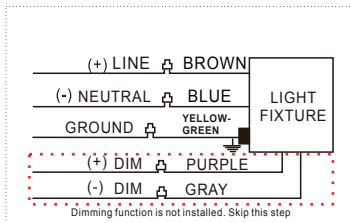
(US)

- \* Connect the black fixture lead to the (+) LINE supply lead.
- \* Connect the white fixture lead to the (-) NEUTRAL supply lead.
- \* Connect the green ground wire form fixture to supply ground.
- \* Connect the purple fixture lead to the (+) dimmer.
- \* Connect the gray fixture lead to the (-) dimmer.



(EU/CN)

- \* Connect the brown fixture lead to the (+) LINE supply lead.
- \* Connect the blue fixture lead to the (-) NEUTRAL supply lead.
- \* Connect the yellow-green wire form fixture to supply ground.
- \* Connect the purple fixture lead to the (+) dimmer.
- \* Connect the gray fixture lead to the (-) dimmer.



► Package



Item	Packaging	Carton Size(mm)	N.W	G.W
All models	1pc/CTN	580X580X420	5.5kg (12.15lb)	6.5kg (14.33lb)